

# NAMI of Kalamazoo NEWS

April/May/June 2010; VOLUME 2 - NUMBER 21

NAMI of Kalamazoo NEWS is published Tri-monthly.

---

NAMI of Kalamazoo is a registered 501C-3 non-profit self-help and advocacy group. Our mailing address is: NAMI of Kalamazoo; P.O. Box 51693, Kalamazoo, MI 49005-1693; Editor: Michael D. Kenny, 269-343-6952

---

---

## Newsletter Notes

This current fiscal year-2010, is the first time in memory that people requiring mental health support in Kalamazoo County are being placed on a waiting list if they personally can't qualify for state Medicaid assistance. This has affected at least 120 people in our county so far. And to make matters more complicated the state has laid off state employees who review, certify, and qualify people who might be potential Michigan Medicaid recipients. Approximately 1 person in 8 is now on Medicaid support in Michigan.

This is may be worse for the upcoming year (2011) as the Michigan legislators are looking for more cuts to all state programs paid out of the Michigan general fund. Financing of government services is a real challenge.

Please contact your elected representatives and let them know your position on these issues. This is especially important during this year due to the major legislative personnel change over in our legislature due to the "term limits" rule.

---

## NAMI Michigan 2010 State Conference, April 24 and 25, 2009 in Grand Rapids, Michigan

NAMI Michigan's State Conference "Finding Truth, Fighting Fear, Fulfilling Lives" is scheduled to be held in Grand Rapids at the Amway Grand on two days, April 24th and 25th, 2010. The Keynote speaker will be the author and LA Times columnist, Steve Lopez, who wrote, *The Soloist*. The Soloist is described by the phrase: "A Lost Dream, an Unlikely Friendship, and the Redemptive Power of Music."

Join NAMI Members and Friends from across Michigan to hear Mr. Lopez speak about his friend, Nathaniel Ayers, a man who is a talented musician and diagnosed with a mental illness who is the focus of Mr. Lopez' book and the film that followed.

The 2010 conference promises to be filled with excellent sessions focused on affiliate development, stigma fighting information and breakthrough programs that will stimulate your thinking and renew

your spirit. Join us in Grand Rapids on Saturday, April 24th and Sunday, April 25th. For more information visit [www.namimi.org](http://www.namimi.org) or call the NAMI Michigan office at 517-485-4049 or email [info@namimi.org](mailto:info@namimi.org).

A copy of the 2010 Conference registration form is included later in this newsletter. Early bird registration till April 1, 2010. The conference program can be found at [www.namimi.org](http://www.namimi.org). Parking fees are waived for those staying overnight at the Amway Grand hotel. Parking is also waived if you are driving in or just coming for a day via a coupon that will be given to you at the registration table.

---

## NAMI of Kalamazoo Meetings

We now hold 1 meeting each month for members, friends, and advocates to attend. This is the Board meeting, which is usually held on the first Thursday of most every month at the Pathways building at 119 West Vine St., in Kalamazoo; about one block from the Bronson Hospital complex. The meeting begins at 6:30 PM.

We will meet next on Thursday, April 1, 2010 for a regular board meeting beginning at 6:30 PM. Our annual business meeting will also be held at the April meeting.

The next two meetings after this will be on May 6 and then on June 3, 2010. There are no board meetings held in July or August. Our annual picnic will be held on Wednesday, August 11, 2010 at Milham Park Pavilion

---

## States Struggle to Balance Budgets, Health Programs Face Cuts

16 Mar 2010; Excerpts from various papers in other states as provided by the Kaiser Family Foundation

National Journal: States are aware of the "lingering effects of recessions" on the enrollment in their Medicaid programs. "Because it takes time for people to re-enter the workforce and get insurance, it can take years for Medicaid rolls to shrink to prerecession levels and for states to restore program and funding cuts." According to a February report by the National

Governors Association, states are "facing budget gaps totaling \$136 billion for fiscal 2010 through 2012 and that Medicaid enrollment would grow 6.6 percent in fiscal 2010" (Werber, Serafini, 3/13).

The (Jacksonville) Florida Times-Union: As Georgia's governor and legislature battle over budget cuts, payments to hospitals are on the line. Gov. Sonny Perdue said last week that since hospitals and some lawmakers are fighting his plan to tax hospitals, he may have to cut Medicaid reimbursements more deeply than anticipated. Perdue's plan "required the hospitals to pay a 1.6 percent tax on their revenues, money many of them would recover by upping their costs, which the federal share of Medicaid was to pay. While some large hospitals that treat loads of Medicaid patients would have come out ahead, many private hospitals would have been the losers. The hospital lobby refused to buy in. It argued instead for a higher tax on cigarettes. ... Perdue said if they didn't want to pay a 1.6 percent tax, maybe they'd rather have a 10.25 percent cut in what they're paid by Medicaid. On top of that, he wants to take away nonprofit hospital's exemption from sales tax on the supplies they buy" (Jones, 3/15).

The Washington Post: "The Virginia General Assembly adjourned its annual legislative session Sunday evening after adopting a two-year, \$82 billion budget that cuts millions from education, health care and public safety – curtailing state spending more aggressively than any in generations while fulfilling the new Republican governor's promise not to raise taxes. The trade-off for holding firm against a tax increase to plug a \$4 billion hole was a spending plan that cuts deeply into virtually every area of state responsibility." Some health cuts include: "Only 250 more mentally disabled adults will receive money to get community-based services, in a state where the waiting list for such services numbers 6,000 and is growing. ... Medical care providers will see Medicaid payments from the state trimmed, and fewer poor children will be enrolled in state health care, although those health cuts could be tempered by anticipated federal funds" (Helderman, 3/15).

The Palm Beach Post: "Almost two years after lawmakers created it, a program to provide affordable health insurance to small businesses has yet to enroll its first client. The goal of the initiative, Florida Health Choices, signed by Gov. Charlie Crist in May 2008, was to provide employees a marketplace of offerings in what's known as an insurance exchange. ... But it's unlikely that will happen until late in the year. Business owners are frustrated. ... The \$1.5 million in funding

has to last until the program starts. So far, \$112,826 has been spent, with the biggest amount - \$90,653 - for consultants and expenses ... Initially, about 20,000 people are expected to participate with the potential for 3.7 million subscribers" (Salisbury, 3/14).

St. Louis Post-Dispatch: Missouri Gov. Jay Nixon, "the Democrat who promised to expand Medicaid, is seeking \$120 million in health care cuts to buoy the sagging state budget. And in a role reversal that illustrates the political quagmire that Medicaid poses for Nixon, it's the Republican Legislature that is balking. Nixon, facing declines in revenue for two straight years, says he has to squeeze savings from all programs, including Medicaid. He can't reduce eligibility because of temporary restrictions set by the federal government under the Stimulus Act. But he wants to rein in spending on home care and anti-psychotic drugs, shift some costs to hospitals and the federal Medicare program, and lower rates the state pays for items such as lab work and X-rays, among other things" (Young, 3/15).

The Myrtle Beach Sun News: The South Carolina "House begins debate today on a budget proposal for the state, to take effect July 1. How the state will pay for health care services in the future is expected to be a heated issue. ... Almost 17,000 South Carolinians could find themselves choosing between the prescriptions they now get from the state. Some of the 20,000 South Carolinians who get free prescriptions from drug companies and others could find there is no one to help them get those drugs. Federal stimulus aid could stave off cuts this year. But next year that aid will be gone, setting the stage for a health care reckoning" (O'Connor, 3/15).

This information was reprinted from [kaiserhealthnews.org](http://kaiserhealthnews.org) with kind permission from the Henry J. Kaiser Family Foundation. You can view the entire Kaiser Daily Health Policy Report; search the archives and sign up for email delivery at [kaiserhealthnews.org](http://kaiserhealthnews.org).

© Henry J. Kaiser Family Foundation. All rights reserved.

=====

Sherri Solomon formerly the executive director of NAMI Michigan has moved on to another job in Michigan effective March 20, 2010. We wish her well in her new position with Hospice in Southfield, Michigan.

## Michigan Developing Plan to Improve Foster Care

State's child welfare system must address problems detailed in federal report in 3 years or face \$2.8 million penalty. By Catherine Jun / The Detroit News

Michigan children in foster care need to be placed in more stable homes, and the state must respond quicker when abuse or neglect is suspected, a federal report states.

These are two of several improvements the Michigan Department of Human Services must make over the next three years to its child welfare system, or face a federal penalty of \$2.8 million.

The deficiencies were detailed in a 112-page report by the U.S. Department of Health and Human Services. It is part of the Child and Family Services Review, a federal effort that began in 2002 to improve foster care.

According to the report, Michigan fell below federal standards in all seven categories measuring the well-being of children in foster care. No state has ever complied with all seven standards.

Michigan officials said Friday they have begun drafting an improvement plan for an April 27 deadline.

According to the report, Michigan succeeded in limiting children's re-entry into foster care and placing children near their parents and with siblings.

The state failed, however, to meet standards in several other areas, including ensuring against repeated abuse or neglect, providing in-home services to prevent child mistreatment and expediting adoptions.

"Everything in the report we take to heart," said Mary Mehren, director of the federal compliance division at Michigan's Human Services Department.

She said many improvements were already under way, including offering specialized in-home support for foster children with severe emotional issues and \$4 million this year for abuse and neglect prevention programs.

The report, issued earlier this month, comes at a time when the state is overhauling its child welfare system. In 2008, the state settled a lawsuit filed by New York-based Children's Rights, which charged the state with endangering the lives of its foster children. The state's system serves about 19,000 children.

Michigan's review began in April 2008 and was conducted through September 2009.

In 2002, Michigan failed to meet any of the seven standards.

Then, a \$2.5 million penalty was threatened, but the state made improvements over the next several years.

[cjun@detnews.com](mailto:cjun@detnews.com) (313) 222-2019

=====

### Internet addresses for your usage

1. Recovery Institute of South West Michigan at [http://recoverymi.org/RI\\_pages/news.php](http://recoverymi.org/RI_pages/news.php)
2. NAMI Michigan site is [www.namimi.org](http://www.namimi.org)  
Children's Issues at Connect for Kids:  
<http://www.connectforkids.org/>
3. Treatment Advocacy Center- stories from across America about mental illness:  
<http://www.treatmentadvocacycenter.org/>
4. A website for consumers by consumers:  
<http://www.mentalhope.com/index.php>
5. Reintegration and recovery:  
<http://www.reintegration.com/>
6. Our NAMI of Kalamazoo site is:  
[www.namikalamazoo.org](http://www.namikalamazoo.org)

---

### NAMI of Kalamazoo-Year 2010 Dues

Our NAMI of Kalamazoo organization serves Kalamazoo and surrounding SW Michigan counties as a local chapter of the National Alliance on Mental Illness. We are also affiliated with the State organization, NAMI Michigan, located in Lansing, MI and the National Alliance on Mentally Illness- NAMI, located in Arlington, VA

NAMI of Kalamazoo goals are to educate, support, and empower individuals and families affected by brain neurobiological disorders (NBD), commonly called mental illnesses. We are a community wide 501C-3 non-profit advocate organization whose members are available and accessible to NBD affected consumers and their families.

*Special thanks to those sending in your additional contributions for our NAMI of Kalamazoo organization; these donations are the only extra monies that we have for activities in addition to the \$5 we keep of your annual dues. We use your donated money to pay for local activities that benefit our community.*

---

---



---

### Recovery Institute of South West Michigan

We are a Peer-to-Peer support organization and are located at 326 W Kalamazoo Ave, Suite 312 in the Park Trade Center, Kalamazoo, MI 49007-3361; our phone is (269) 343-6725

Our Web address is <http://recoverymi.org/> Sign on and read about us and our experiences in recovery.

A National Association of Peer Specialists Conference will be held next summer. The 4th annual national peer specialist conference is planned for August 23-25, 2010 at the Westin Hotel in Lombard, Illinois. Plan now for another exciting conference where peer specialists from across the country gather to share knowledge, experiences and fun. More information about the conference will appear on the NAPS website, <http://www.naops.org> as it becomes available.

---



---

### Local Activities in SW Michigan

1. Regional Legislative Breakfast Meeting in April. Public is welcome to attend a nine County (9) regional legislative meeting to be held at the WMU Fetzer Center on Monday, April 12, 2010 beginning at 8:30 AM. For registration and information call Mrs. Joan Keilen at 553-8035
2. NAMI Michigan's State Conference ;"Finding Truth, Fighting Fear, Fulfilling Lives" is scheduled to be held in Grand Rapids at the Amway Grand Hotel on two days, Saturday and Sunday, April 24th and 25th, 2010.
3. 2010 Mental Health Awareness Festival in May. Possibly the original Bronson Park venue or in the Radisson's Ballroom during the afternoon on May 14, 2010. The event was sponsored and very well coordinated by members of Power Branch including Pat Kaufmann. NAMI of Kalamazoo donated \$400 toward the expenses of this year's festival.
4. Special Needs Trust Presentation by attorney, Amy R. Tripp, with Chalgian and Tripp Law Offices from 6:30pm to 8:30pm on June 15, 2010. Call Ms. Renate Shiver, Family Support KCMHSAS, at 553-7096 for information.

5. Family Support Network Potluck. A quarterly informal social evening for families to share a meal and their experiences with each other. Just bring a dish to share. On Friday evenings from 6:30pm to 8:30pm on: June 18, 2010, September 17, 2010 and December 17, 2010.
  6. Summerfest at KPH in July. The annual Summerfest fair for 2010 will be held on Thursday, July 22, 2010 from 11AM till 3PM on the front lawn of the Kalamazoo Psychiatric Hospital on Oakland Drive, Kalamazoo. For more information call Ms. Deanna Bush at 269-337-3208.
  7. NAMI of Kalamazoo Annual Picnic will be held on Wednesday, August 11, 2010 at the Milham Park Pavilion on Kilgore Road in Kalamazoo. Begins at 5:00 PM; for consumers, families, and friends. NAMI will furnish brats, hamburgers, hot dogs, chips, drinks, and some salads. Friends and family- please bring a dish to pass for 6 people.
  8. Family Support Classes at KCMHSAS. The Fall FIA program starts Tuesday, September 14, 2010. Call Ms. Renate Shiver, Family Support KCMHSAS, at 553-7096 for information and registration for the next "Families in Action" class. Family Support also teaches several other mental health classes during the year. All classes are no cost to participants. This Fall FIA program starts Tuesday, September 14, 2010 from 6:30 to 8:30 in Conference Room A at 418 W. Kalamazoo Ave.
  9. NAMI WALKS in September. A major upcoming statewide fund event for NAMI Michigan is the NAMI Walks scheduled for this fall on Saturday, September 25 at the Oakland Community College, Orchard Ridge Campus.
- 
- 

Michigan's General Fund. By statute the General Fund covers all state appropriation, expenditure and receipt transactions, except those for which special constitutional or statutory requirements demand separate fund accounting. Most of the traditional state services are included in the General Fund. The current size of the General Fund in the initial budget for fiscal year 2010 is \$8.1 billion

**NAMI Michigan Registration Form for the 2010 Grand Rapids State Conference  
 Saturday & Sunday, April 24<sup>th</sup> & 25<sup>th</sup>, 2010  
 Theme: "Finding Truth, Fighting Fear, Fulfilling Lives"**

Location: Amway Grand Plaza Hotel; 187 Monroe Ave. NW, Grand Rapids, Michigan  
 \*Call 800.253.3590 to reserve your Amway Hotel room\* Mention **NAMI** for a room rate of \$109.00  
 Parking is waived for those staying overnight at the hotel. Parking is also waived if you are driving in or just coming for a day via a coupon that will be given to you at the NAMI conference registration table.

**Registration Information:**

Name: \_\_\_\_\_ Current NAMI Member? Yes No  
 Address: \_\_\_\_\_ if no, would you like to join NAMI? Yes No  
 City & Zip: \_\_\_\_\_ Membership cost: \$30  
 Phone: \_\_\_\_\_ Open Door Membership \$3 minimum  
 E-mail: \_\_\_\_\_ \*\* any special physical or dietary needs?

Is your registration sponsored by a CMH? NO YES CMH Name: \_\_\_\_\_  
 \_\_\_\_\_  
 If you're Community Mental Health (CMH) will pay for this registration, obtain an authorization & indicate below:  
 Provider or Agency Name: \_\_\_\_\_ Phone #: \_\_\_\_\_  
 Authorization (print name): \_\_\_\_\_ Signature: \_\_\_\_\_

**Conference Fee Schedule**

<b>A. Full 2-day Conference</b>	<b>(includes Saturday /Sunday – Lunch; Saturday - Dinner)</b>	
	<b>NAMI Member</b>	<b>Non-Member (Investor)</b>
1. "Early Bird" 2-day Conf. (Registration received by <u>April 1</u> )	\$150	\$225
2. 2-day Conference (After April 1, 2010 & at the Door)	\$200	\$275
3. Attend Saturday Luncheon <i>ONLY</i> (w/Keynote Speaker, Steve Lopez)	\$50	\$50
4. Saturday Conference <i>ONLY</i> (includes all meals)	\$125	\$125
5. Sunday Conference <i>ONLY</i> (includes all meals)	\$75	\$75
* Extra general meal purchases will be available		
* Please call the NAMI Michigan office for scholarship information		

<u>Quantity</u>	<u>Item</u>	<u>Amount</u>
_____	Full Registration(s) . . . . .	_____
_____	I want to join NAMI . . . . .	_____
_____	Saturday Luncheon <b>ONLY</b> (Steve Lopez). . . . .	_____
_____	Saturday Conference <b>ONLY</b> . . . . .	_____
_____	Sunday Conference <b>ONLY</b> . . . . .	_____
_____	My Donation to Support Limited Income Registrants . . . . .	_____
	<b>TOTAL Payment ENCLOSED \$</b>	_____

You may send one payment for multiple registrations, but please use a separate registration form for each attendee. Enclose a check or money order made payable to "NAMI Michigan" & mail to:  
 NAMI Michigan  
 921 N. Washington Ave.  
 Lansing, MI 48906-5137  
**Deadline** for receipt of this form in the NAMI Michigan office is **April 16, 2010**.  
 Otherwise register at the door.  
**NOTE:** NAMI Michigan cannot refund registrations cancelled after April 16.

# NAMI of Kalamazoo

(National Alliance on Mental Illness)

## **“ANNUAL PICNIC-2010”**

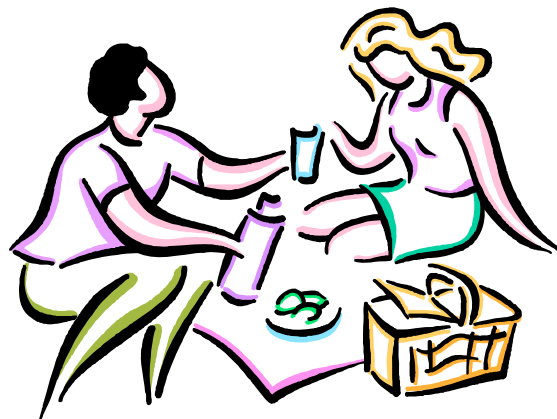
**Wednesday, August 11, 2010  
5:00 p.m. – 7:00 p.m.**

Picnic Location: Milham Park Pavilion,  
Corner of Kilgore Road and Lovers Lane, Kalamazoo, Michigan

*For consumers, families, and friends*

NAMI will furnish brats, hamburgers, hot dogs, chips, drinks, and some salads

*Friends and family- please bring a dish to pass for 6 people*



*Please join us;  
You don't have to be a member of NAMI to attend; thanks, see you there.*

## Renew or Join or Rejoin or Donate to NAMI of Kalamazoo for 2010

\*NAMI of Kalamazoo-Year 2010-2011 Dues. The mailing label on your mailed copy of the newsletter normally gives your membership expiration date. We do not invoice (USPS mail) separately for continued memberships but ask that you renew according to this newsletters mailing label.

Our NAMI of Kalamazoo affiliate serves Kalamazoo and surrounding counties as a local chapter of the National Alliance on Mental Illness. We are also affiliated with the State organization, NAMI Michigan, with offices located in Lansing, MI and the National Alliance on Mentally Illness- NAMI, with offices located in Arlington, VA.

When you join NAMI Kalamazoo part of the regular \$25 dues you pay to us goes to the NAMI Michigan State organization (\$10) and part goes to the NAMI National organization (\$10). So by joining us you belong to all 3 groups. This means that you will receive mailings from all three NAMI groups at different times during the year.

Please use this sheet to join/renew membership in NAMI of Kalamazoo. We collect dues anytime and credit you in a running year method. Date of your payment plus 12 months is your membership time. Please look at your mailing label if you are renewing your membership.

Most of our local programs are funded by your generous donations since we only keep \$5 of the dues monies that you send in to us. **We really like donations.**

---

### 2010 Yearly Memberships in **NAMI of Kalamazoo**, *please circle your membership type:*

Regular= \$25.00                  Open door = 5.00                  Professional Organization= \$40.00

Dues enclosed = \_\_\_\_\_ + my extra Donation to NAMI of Kalamazoo = \_\_\_\_\_ = Total \$ \_\_\_\_\_

Name (print please) \_\_\_\_\_

Address \_\_\_\_\_ is this a new address since last year? \_\_\_\_\_  
Street                                  City                                  Zip

Phone #- \_\_\_\_\_ is this a new phone number for you since last year? \_\_\_\_\_

My E-mail address is \_\_\_\_\_

.....  
Make your Checks or Money Orders payable NAMI of Kalamazoo and then send to our USPS mailing address at:

**NAMI of Kalamazoo**  
**P.O. Box 51693**  
**Kalamazoo, MI 49005-1693**

---

**NAMI of Kalamazoo serves to educate, support, and empower individuals and families affected by brain neurobiological disorders (NBD), commonly called mental illnesses. We are a community wide 501C-3 non-profit advocate organization whose members are available and accessible to NBD affected consumers and their families.**

The current NAMI of Kalamazoo Board members for 2010 are: Mike Kenny (343-6952), Tom Belco (685-8243), Mrs. Ann Bonevich (349-8444), Linda DeYoung, Mr. Bob Green, Ms. Chaya Gieszer, and Ms.Toni Morrian.

NAMI of Kalamazoo now holds 1 meeting each month for members, friends, and advocates to attend. This is the local Board meeting, which is held on the first Thursday of most every month at the Pathways building at 119 West Vine St., in Kalamazoo. This meeting begins at 6:30PM. Calendar of upcoming events is on the next page.

NAMI of Kalamazoo NEWS

Alliance for the Mentally Ill

P.O. Box 51693

Kalamazoo, MI 49005-1693

**April 2009**

**Thursday, April 1, 2010 NAMI of Kalamazoo board meeting and our annual business meeting at 6:30 PM; Pathways—119 West Vine St.**

**Monday, April 12, 2010 at the Fetzer Center on the WMU campus from 9 to 11AM; a 9 county SW/Venture regional breakfast meeting with area legislators. RSVP to Joan K. at 553-8035 or to Sharon W. at 553-8095**

**Saturday and Sunday, April 24-25; NAMI Michigan annual conference and seminars; Amway Grand Hotel, Grand Rapids, MI. Conference Registration form and information is in this newsletter and at [www.mi.nami.org](http://www.mi.nami.org)**

**May 2010**

**Thursday, May 6, 2010 at 6:30PM, NAMI of Kalamazoo Board meets; Pathways building—119 West Vine St.**

**Friday, May 14, 2010 at 9:30 AM at the Radisson Plaza Hotel in downtown Kalamazoo; the Annual Mental Health Breakfast sponsored by KCMHSAS; the public is invited. For information please call 269-553-8000. The Mental Health Awareness Festival follows the breakfast and will be held in Bronson Park.**

**June 2010**

**Thursday, June 3, 2010 at 6:30PM, NAMI of Kalamazoo Board meeting; Pathways building—119 West Vine St.**

**July 2010**

**Thursday, July 22, 2010- Summerfest on the KPH Oakland Drive front lawn; starts at 11AM, annual gathering for peers, friends, and family.**

**August 2010**

**Wednesday, August 11, 2010 begins at 5 PM at the Milham Park Pavilion off Kilgore Road in Kalamazoo; Annual NAMI picnic for peers, friends, and family; no charge; please bring a dish to pass; burgers, hotdogs, and drinks provided.**